



ISLEWORTH

51 stunning contemporary apartments between river and park, perfectly placed for life in this thriving London village.

INTRODUCTION	02
THE APARTMENTS	04
THE LOCATION	12
MAP AND TRAVEL TIMES	20
THE FLOORPLANS	22
ABOUT TOPOLOGY	30
THE SPECIFICATION	31
THE LANDSCAPE	32
ABOUT FRT	34

THIS IS NOMA

An exclusive collection of beautiful homes with generous balconies, landscaped riverside gardens and sweeping city views. Minutes from Isleworth railway station, steps from St John's Gardens.





LIGHT BRIGHT & PERFECTLY PLACED

— **Luxury living minutes from
Isleworth's railway station, historic
pubs and riverside. Discover a better
London lifestyle in Isleworth.**

St John's Gardens outside your front window and the landscaped residents' garden on your doorstep. West London's most exclusive riverside villages within walking distance, and the West End and Square Mile just a short train ride away. Welcome to NOMA.

Full-height windows flood NOMA's airy, aesthetic living spaces with natural light, and offer ever-changing city views from homes on the higher floors.





Entertain friends in your open-plan kitchen, where sleek units, integrated appliances and quartz worktops balance contemporary style and timeless quality.

Luxurious, eye-catching and intelligently designed, NOMA's bedrooms and bathrooms are built to help you start every day feeling refreshed and energised.





Images...
St John's Church
Syon Café
Ballucci



LIFE IN ISLEWORTH

— Bustling and historic, Isleworth is a thriving London village offering NOMA residents an enviable west London lifestyle.

On NOMA's doorstep, popular local shops line St John's Road — bakers and florists, delis and furniture stores. Wander through St John's Gardens and meet friends at coffee lounge Ballucci, head to Old Isleworth for lunch, or spend the evening at the London Apprentice, one of the neighbourhood's best-loved riverside pubs.

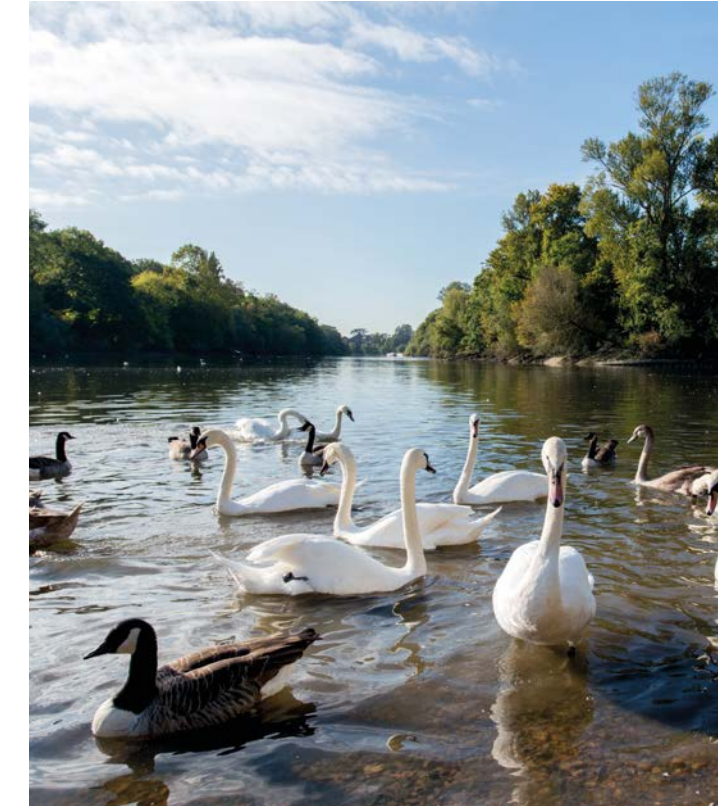
Vital and dynamic, Isleworth and the surrounding riverside villages have been some of the capital's most desirable suburbs for centuries. The future looks even brighter, as local regeneration is set to bring infrastructure improvements and a host of new leisure, cultural and entertainment amenities to the area.

BY THE RIVER



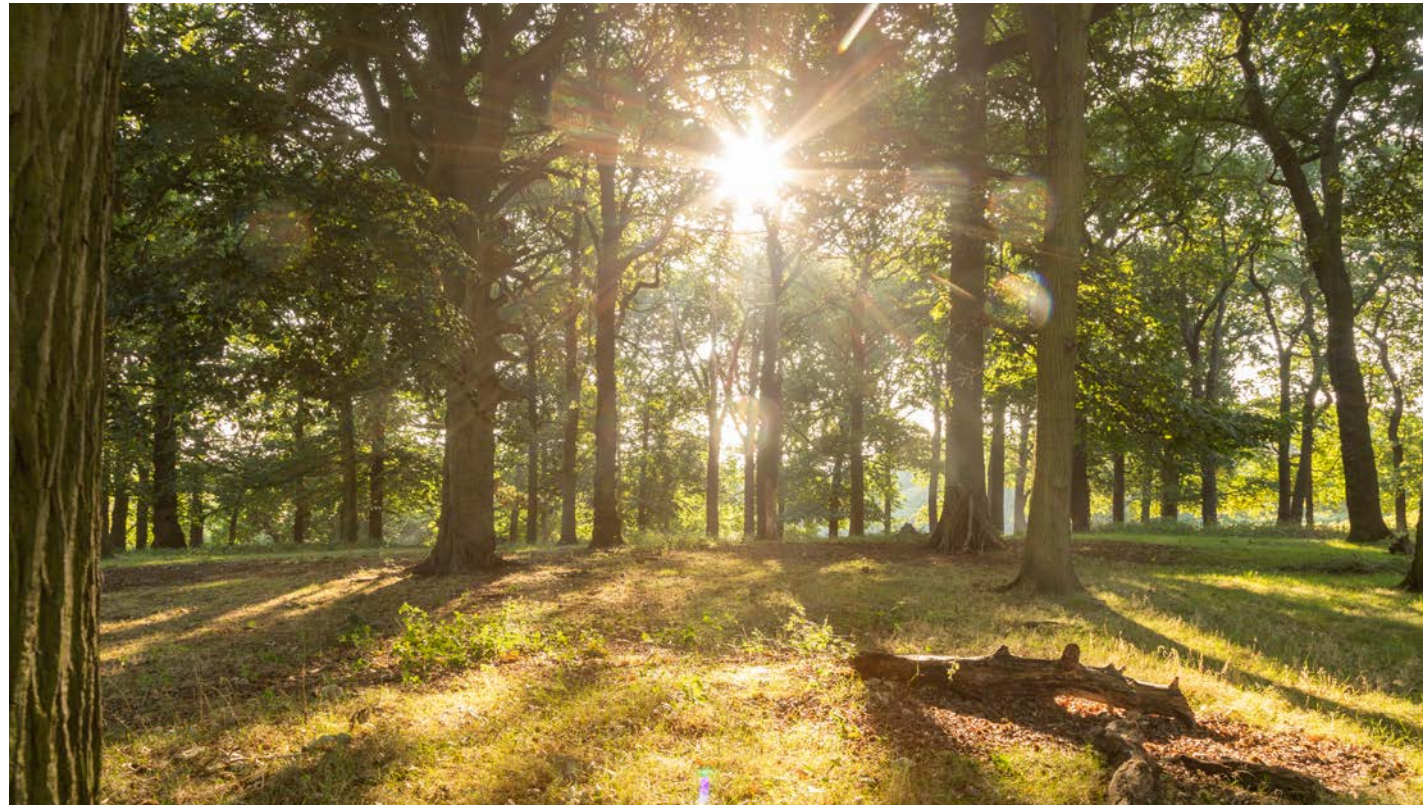
The constant flow of the Thames sets the pace of life in Isleworth, and the river is at the heart of the NOMA lifestyle – from morning runs or weekend bike rides along the Thames path to long afternoons in riverside parks and late nights with live music at pubs by the water. It's time to move upstream.

Images_ Isleworth and Richmond riverside



GET OUTSIDE

London's great outdoors is on your doorstep. Syon Park, Isleworth's best historic park, feels like stepping into the deep countryside — but it's just a 7 min bike ride away.



The buzzing riverside village of Richmond is only around 15 mins away by bike. Sweeping, world-renowned Richmond Park offers sports facilities, a golf course, and room to explore with views over St Paul's and the City.

Nearby, the iconic Kew Gardens offers 300 acres of parkland, cafés and glasshouses to get lost in, including the recently restored Victorian Temperate House.



Images_ Richmond Park





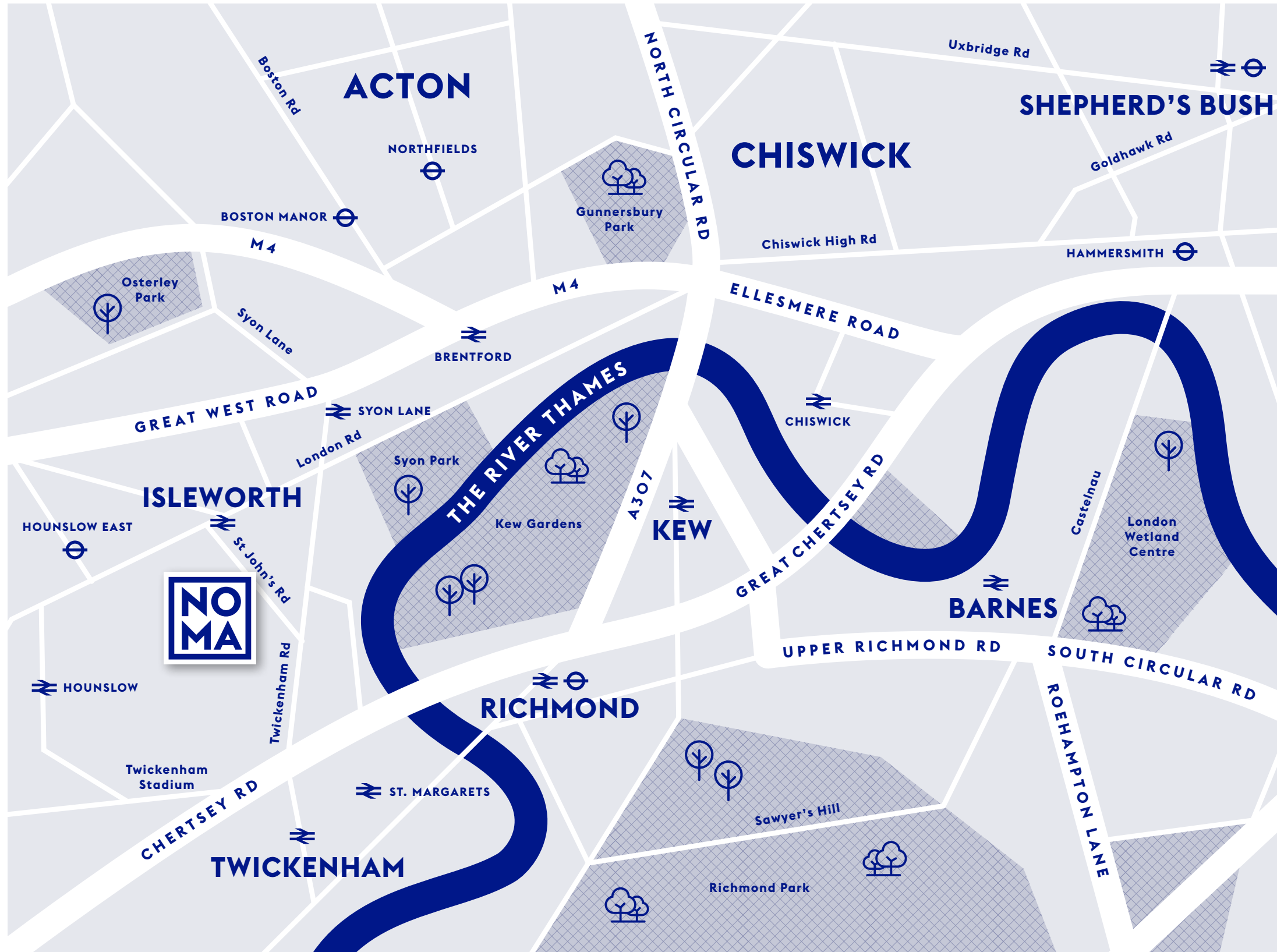
Richmond offers some of west London's best shopping and places to eat.

Dive into Petersham Nurseries – a boutique homeware store and garden centre with an already legendary café. For fine dining book a table at The Ivy Café or Georgian townhouse hotel The Bingham.

Chiswick is home to Soho House's High Road House, as well as branches of Franco Manca, Pho and Bill's. Visit Chief Coffee for flat whites and a basement lounge full of classic pinball machines, or meet friends at one of the area's riverside bars.

Images_ Petersham Nurseries Markets in Richmond Twickenham Stadium

GETTING AROUND



Isleworth's Zone 4 railway station is just a few minutes' walk from NOMA, offering journey times into Waterloo of around 35 mins.

Seven trains an hour connect the village and central London. Hounslow East, Isleworth's nearest London Underground station, provides direct links to central London and Heathrow Airport. Kew, Chiswick and Richmond Park are less than 20 mins away by train or bike.

BY FOOT



Isleworth Station	4 mins
Hounslow East (tube)	15 mins
Syon Lane Station	17 mins
Osterley Station (tube)	18 mins

BY BIKE



Twickenham Stadium	6 mins
Kew Gardens	12 mins
Chiswick High Road	19 mins
Richmond Park	22 mins

BY TUBE



(FROM HOUNSLOW EAST)

Heathrow Terminal 4	11 mins
Acton Town	13 mins
Hammersmith	20 mins
Richmond	30 mins
Green Park	35 mins

BY TRAIN



(FROM ISLEWORTH STATION)

Kew Bridge Station	7 mins
Chiswick	10 mins
Clapham Junction	24 mins
Vauxhall	30 mins
Waterloo	35 mins

All times are approximate. Sources: tfl.gov.uk, walkit.com, googlemaps

GROUND FLOOR

FLAT 1
2 BED
732 SQ FT, 68 SQ M

KITCHEN / LIVING / DINING
4.5m x 8.1m (max)
14'8" x 26'6"

BEDROOM 1
4.2m x 2.7m (max)
13'8" x 8'9"

BEDROOM 2
2.7m x 3.8m (max)
8'9" x 10'8"

FLAT 6
3 BED
883 SQ FT, 82 SQ M

KITCHEN / LIVING / DINING
6.8m x 4.3m (max)
22'3" x 14'1"

BEDROOM 1
2.7m x 4.5m (max)
8'9" x 14'8"

BEDROOM 2
3.3m x 3.7m (max)
10'8" x 10'5"

BEDROOM 3
3.2m x 2.6m (max)
10'4" x 8'5"

FLAT 9/10/11
1 BED
420 SQ FT, 39 SQ M

KITCHEN / LIVING / DINING
3.4m x 6.7m (max)
11'2" x 22'0"

BEDROOM
2.7m x 3.9m (max)
8'9" x 12'8"

FLAT 14
1 BED
581 SQ FT, 54 SQ M

KITCHEN / LIVING / DINING
7.1m x 4.7m (max)
23'3" x 15'4"

BEDROOM
3.7m x 3.3m (max)
12'1" x 10'8"

FLAT 2/3/4
1 BED
506 SQ FT, 47 SQ M

KITCHEN / LIVING / DINING
3.4m x 8.1m (max)
11'2" x 26'6"

BEDROOM
2.7m x 4.8m (max)
8'9" x 15'7"

FLAT 7
2 BED
721 SQ FT, 67 SQ M

KITCHEN / LIVING / DINING
4.2m x 6.6m (max)
13'8" x 21'7"

BEDROOM 1
2.7m x 4.5m (max)
8'9" x 14'8"

BEDROOM 2
3.6m x 4.3m (max)
11'8" x 14'5"

FLAT 12
1 BED
441 SQ FT, 41 SQ M

KITCHEN / LIVING / DINING
3.4m x 6.7m (max)
11'2" x 22'0"

BEDROOM
2.9m x 3.8m (max)
9'5" x 12'5"

FLAT 15
1 BED
570 SQ FT, 53 SQ M

KITCHEN / LIVING / DINING
6.6m x 3.9m (max)
21'7" x 12'8"

BEDROOM
5.8m x 3.2m (max)
19'0" x 10'5"

FLAT 5
1 BED
517 SQ FT, 48 SQ M

KITCHEN / LIVING / DINING
3.5m x 8.1m (max)
11'5" x 26'6"

BEDROOM
2.8m x 4.8m (max)
9'2" x 15'7"

FLAT 8
1 BED
431 SQ FT, 40 SQ M

KITCHEN / LIVING / DINING
3.5m x 6.7m (max)
11'5" x 22'0"

BEDROOM
2.8m x 3.9m (max)
9'2" x 12'8"

FLAT 13
1 BED
431 SQ FT, 40 SQ M

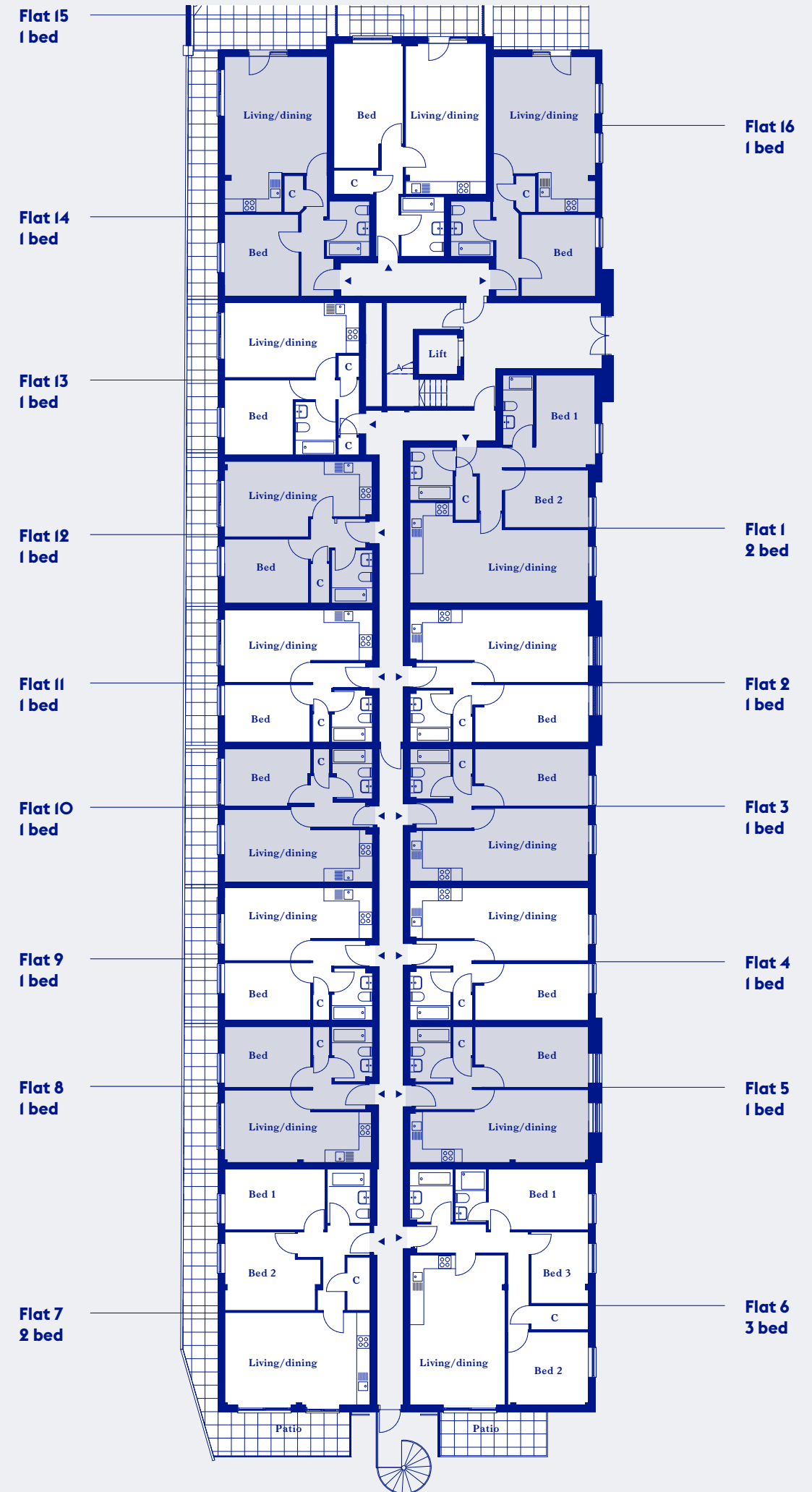
KITCHEN / LIVING / DINING
3.4m x 6.1m (max)
11'2" x 20'0"

BEDROOM
3.4m x 3.8m (max)
11'2" x 12'5"

FLAT 16
1 BED
570 SQ FT, 53 SQ M

KITCHEN / LIVING / DINING
7.1m x 4.7m (max)
23'3" x 15'4"

BEDROOM
3.7m x 3.3m (max)
12'1" x 10'8"



FIRST FLOOR

FLAT 17
2 BED
732 SQ FT, 68 SQ M

KITCHEN / LIVING / DINING
4.5m x 8.1m (max)
14'8" x 26'6"

BEDROOM 1
4.2m x 2.7m (max)
13'8" x 8'9"

BEDROOM 2
2.7m x 3.8m (max)
8'9" x 10'8"

FLAT 22
3 BED
893 SQ FT, 83 SQ M

KITCHEN / LIVING / DINING
6.8m x 4.3m (max)
22'3" x 14'1"

BEDROOM 1
2.7m x 4.5m (max)
8'9" x 14'8"

BEDROOM 2
3.3m x 3.7m (max)
10'8" x 10'5"

BEDROOM 3
3.2m x 2.6m (max)
10'4" x 8'5"

FLAT 25/26/27
1 BED
420 SQ FT, 39 SQ M

KITCHEN / LIVING / DINING
3.4m x 6.7m (max)
11'2" x 22'0"

BEDROOM
2.7m x 3.9m (max)
8'9" x 12'8"

FLAT 30
1 BED
581 SQ FT, 54 SQ M

KITCHEN / LIVING / DINING
7.1m x 4.7m (max)
23'3" x 15'4"

BEDROOM
3.7m x 3.3m (max)
12'1" x 10'8"

FLAT 18/19/20
1 BED
506 SQ FT, 47 SQ M

KITCHEN / LIVING / DINING
3.4m x 8.1m (max)
11'2" x 26'6"

BEDROOM 1
2.7m x 4.8m (max)
8'9" x 15'7"

FLAT 23
2 BED
721 SQ FT, 67 SQ M

KITCHEN / LIVING / DINING
4.7m x 6.6m (max)
15'4" x 21'7"

BEDROOM 1
3.5m x 4.3m (max)
11'5" x 14'1"

BEDROOM 2
3.4m x 3.0m (max)
11'2" x 9'8"

FLAT 28
1 BED
441 SQ FT, 41 SQ M

KITCHEN / LIVING / DINING
3.4m x 6.7m (max)
11'2" x 22'0"

BEDROOM
2.9m x 3.8m (max)
9'5" x 12'5"

FLAT 31
1 BED
570 SQ FT, 53 SQ M

KITCHEN / LIVING / DINING
6.6m x 3.9m (max)
21'7" x 12'8"

BEDROOM
5.8m x 3.2m (max)
19'0" x 10'5"

FLAT 21
1 BED
517 SQ FT, 48 SQ M

KITCHEN / LIVING / DINING
3.5m x 8.1m (max)
11'5" x 26'6"

BEDROOM 1
2.8m x 4.8m (max)
9'2" x 15'7"

FLAT 24
1 BED
431 SQ FT, 40 SQ M

KITCHEN / LIVING / DINING
3.5m x 6.7m (max)
11'5" x 22'0"

BEDROOM
2.8m x 3.9m (max)
9'2" x 12'8"

FLAT 29
1 BED
431 SQ FT, 40 SQ M

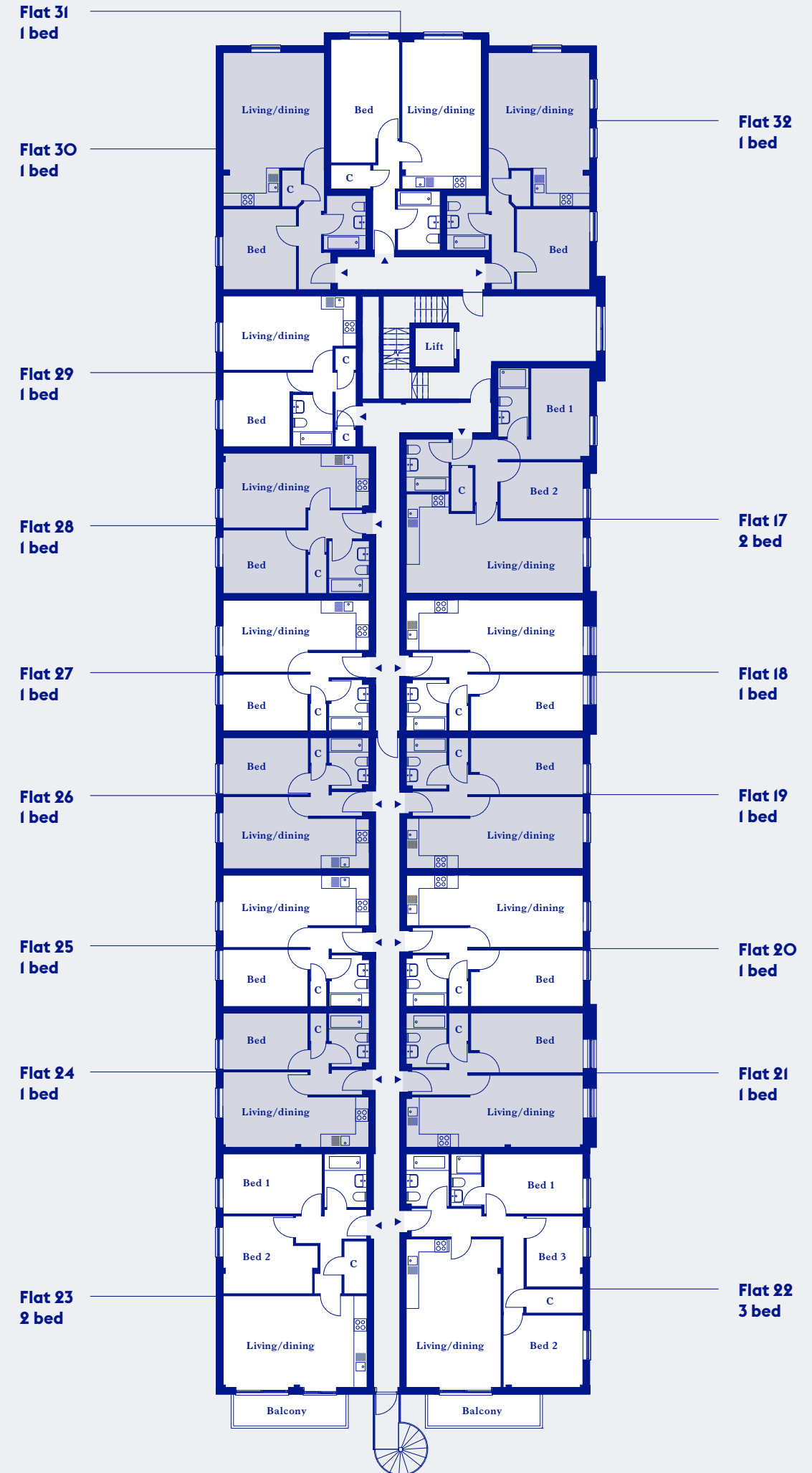
KITCHEN / LIVING / DINING
3.4m x 6.1m (max)
11'2" x 20'0"

BEDROOM
3.4m x 3.8m (max)
11'2" x 12'5"

FLAT 32
1 BED
570 SQ FT, 53 SQ M

KITCHEN / LIVING / DINING
7.1m x 4.7m (max)
23'3" x 15'4"

BEDROOM
3.7m x 3.3m (max)
12'1" x 10'8"



SECOND FLOOR

FLAT 33
1 BED
527 SQ FT, 49 SQ M

KITCHEN / LIVING / DINING
6.1m x 4.2m (max)
20'0" x 13'8"

BEDROOM
2.8m x 4.9m (max)
9'2" x 16'1"

FLAT 36
1 BED
441 SQ FT, 41 SQ M

KITCHEN / LIVING / DINING
4.35m x 6.05m (max)
14'4" x 19'10"

BEDROOM
2.8m x 3.65m (max)
9'3" x 12'0"

FLAT 39
1 BED
441 SQ FT, 41 SQ M

KITCHEN / LIVING / DINING
4.35m x 6.05m (max)
14'4" x 19'10"

BEDROOM
2.8m x 3.65m (max)
9'3" x 12'0"

FLAT 42
1 BED
527 SQ FT, 49 SQ M

KITCHEN / LIVING / DINING
6.1m x 4.2m (max)
20'0" x 13'8"

BEDROOM
2.8m x 4.9m (max)
9'2" x 16'1"

FLAT 34
1 BED
527 SQ FT, 49 SQ M

KITCHEN / LIVING / DINING
6.1m x 4.2m (max)
20'0" x 13'8"

BEDROOM
2.8m x 4.9m (max)
9'2" x 16'1"

FLAT 37
1 BED
441 SQ FT, 41 SQ M

KITCHEN / LIVING / DINING
4.35m x 6.05m (max)
14'4" x 19'10"

BEDROOM
2.8m x 3.65m (max)
9'3" x 12'0"

FLAT 40
1 BED
441 SQ FT, 41 SQ M

KITCHEN / LIVING / DINING
4.35m x 6.05m (max)
14'4" x 19'10"

BEDROOM
2.8m x 3.65m (max)
9'3" x 12'0"

FLAT 43
2 BED
753 SQ FT, 70 SQ M

KITCHEN / LIVING / DINING
4.3m x 6.3m (max)
14'1" x 20'7"

BEDROOM 1
3.8m x 3.2m (max)
12'5" x 10'5"

BEDROOM 2
3.3m x 4.3m (max)
10'8" x 14'1"

FLAT 35
1 BED
441 SQ FT, 41 SQ M

KITCHEN / LIVING / DINING
4.35m x 6.05m (max)
14'4" x 19'10"

BEDROOM
2.8m x 3.65m (max)
9'3" x 12'0"

FLAT 38
1 BED
441 SQ FT, 41 SQ M

KITCHEN / LIVING / DINING
4.35m x 6.05m (max)
14'4" x 19'10"

BEDROOM
2.8m x 3.65m (max)
9'3" x 12'0"

FLAT 41
1 BED
441 SQ FT, 41 SQ M

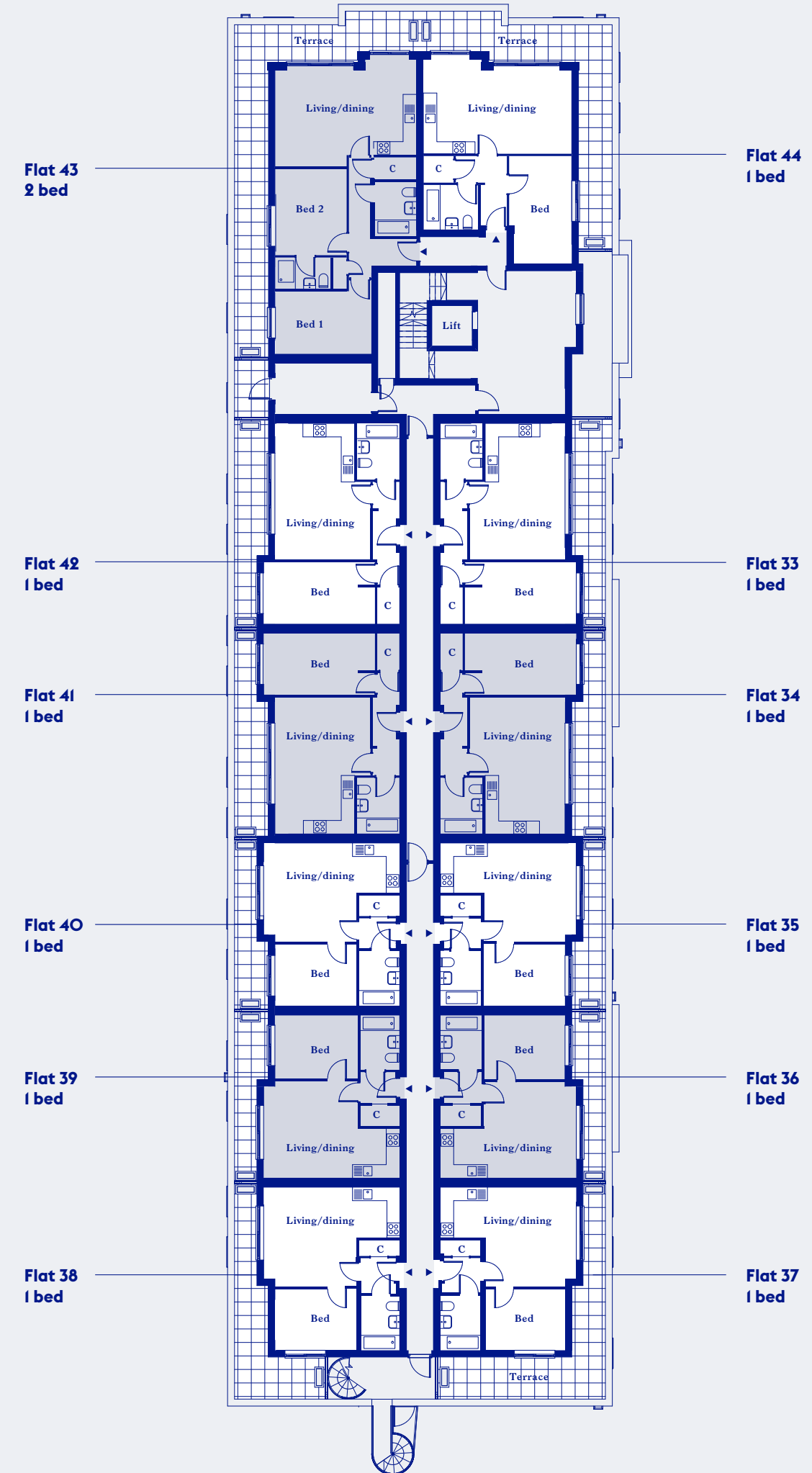
KITCHEN / LIVING / DINING
4.35m x 6.05m (max)
14'4" x 19'10"

BEDROOM
2.8m x 3.65m (max)
9'3" x 12'0"

FLAT 44
1 BED
549 SQ FT, 51 SQ M

KITCHEN / LIVING / DINING
4.2m x 6.6m (max)
13'8" x 21'7"

BEDROOM
5.0m x 2.8m (max)
16'4" x 9'2"



THIRD FLOOR

FLAT 45
2 BED
732 SQ FT, 68 SQ M

KITCHEN / LIVING / DINING
5.1m x 8.6m (max)
16'7" x 28'2"

BEDROOM 1
2.8m x 4.4m (max)
9'2" x 14'4"

BEDROOM 2
2.8m x 4.6m (max)
9'2" x 15'1"

FLAT 46
2 BED
732 SQ FT, 68 SQ M

KITCHEN / LIVING / DINING
5.1m x 8.6m (max)
16'7" x 28'2"

BEDROOM 1
2.8m x 4.4m (max)
9'2" x 14'4"

BEDROOM 2
2.8m x 4.6m (max)
9'2" x 15'1"

FLAT 47
1 BED
527 SQ FT, 49 SQ M

KITCHEN / LIVING / DINING
2.9m x 8.6m (max)
9'5" x 28'2"

BEDROOM
2.7m x 5.2m (max)
8'9" x 17'1"

FLAT 48
1 BED
527 SQ FT, 49 SQ M

KITCHEN / LIVING / DINING
2.9m x 8.6m (max)
9'5" x 28'2"

BEDROOM
2.7m x 5.2m (max)
8'9" x 17'1"

FLAT 49
1 BED
527 SQ FT, 49 SQ M

KITCHEN / LIVING / DINING
2.9m x 8.6m (max)
9'5" x 28'2"

BEDROOM
2.7m x 5.2m (max)
8'9" x 17'1"

FLAT 50
1 BED
527 SQ FT, 49 SQ M

KITCHEN / LIVING / DINING
2.9m x 8.6m (max)
9'5" x 28'2"

BEDROOM
2.7m x 5.2m (max)
8'9" x 17'1"

FLAT 51
2 BED
743 SQ FT, 69 SQ M

KITCHEN / LIVING / DINING
5.9m x 6.3m (max)
19'4" x 20'7"

BEDROOM 1
3.6m x 3.4m (max)
11'8" x 11'2"

BEDROOM 2
3.4m x 4.5m (max)
11'2" x 16'4"

Flat 51
2 bed

Flat 45
2 bed

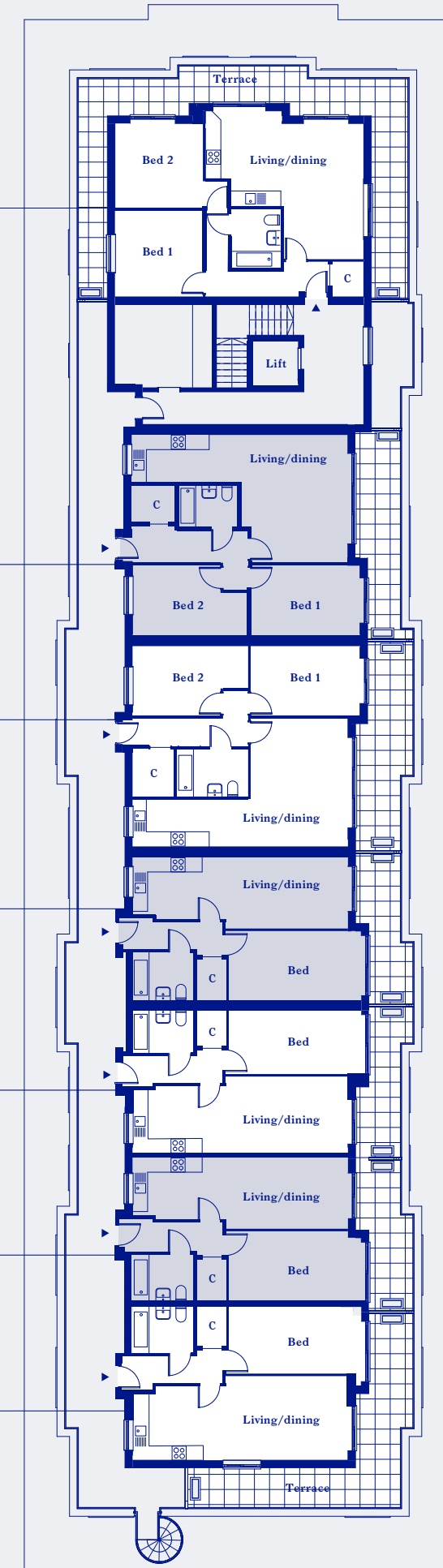
Flat 46
2 bed

Flat 47
1 bed

Flat 48
1 bed

Flat 49
1 bed

Flat 50
1 bed



PARTNERS IN DESIGN



We collaborated with Topology to create NOMA's beautiful living spaces.

Topology is an award-winning interior design house that focuses on creating beautiful, high-quality interiors. Topology regularly collaborates with household-name brands including Habitat – the primary supplier of furniture for NOMA's furniture packages.

For more information, or to browse their blog (voted 'Best Interior Designer Blog' at the Interior Blog Awards), visit their website.

WWW.TOPOLOGYINTERIORS.COM



THE SPEC



KITCHENS

- Bespoke design
- Handleless joinery
- Quartz worktop and upstand (non-porous, scratch resistant, 10 yr warranty)
- Integrated appliances including:
 - Zanussi dishwasher
 - Zanussi multifunction oven
 - Elica extraction fan & hood
 - Beko fridge/freezer
 - Beko washer dryer
 - Zanussi ceramic hob

BATHROOMS

- Mandarin Stone 'rocco white' porcelain wall tiles
- Hansgrohe basin & bath mixer taps
- Heated towel rail
- Hansgrohe thermostatic shower set

FLOORING

- Brushed white oak flooring to living spaces
- Kingsmead wool loop carpet to bedrooms
- Mandarin Stone 'rocco white' porcelain tiles

ENERGY

- BREEAM 'Excellent'* (shortlisted for the BREEAM awards 2019)
- Solar panels to provide a source of energy to common areas
- Vaillant ecoTec gas-fired combi boiler
- Electric car charging ports available

TECH

- 'Fibre to premises' superfast broadband with speeds up to 300 MBPS
- Satellite system with capacity for Sky Q connection

EXTERIOR

- Shared landscaped garden
- Private patios at ground floor and balconies to upper floors*
- Zinc cladding in quartz finish
- Smeed Dean London stock brick
- Velfac aluminium windows

SECURITY & PEACE OF MIND

- 10-year building warranty
- Intercom system to main entrance with fob entry
- Secure private parking available
- External lighting to car park and cycle store
- Hardwired multi-sensor and smoke alarm to all apartments
- Secure cycle store

*To all applicable units

A BETTER LONDON LIFESTYLE

From NOMA's sleek, beautifully finished luxury apartments with private balconies to its cityscape views and landscaped waterside residents' garden, discover a better London lifestyle in the heart of Isleworth's easy bustle.





The Timberyard, Worcester Park



The Old Bakery, Wandsworth

ABOUT US

— We are a hands-on, creative team who are committed to overseeing the highest standards of design and construction.

At FRT Developments, we believe that the unprecedented demand for quality housing in London needs to be answered with a new methodology — a better way of creating well-built, functional and energy efficient homes. That's what drives all of our residential developments. We aim to exceed customer expectations, building desirable homes for Londoners and creating an enduring, positive legacy through our work.



[CLICK HERE TO REGISTER YOUR INTEREST](#)