

Banks Place

London Road, Isleworth, London, TW7 4EJ

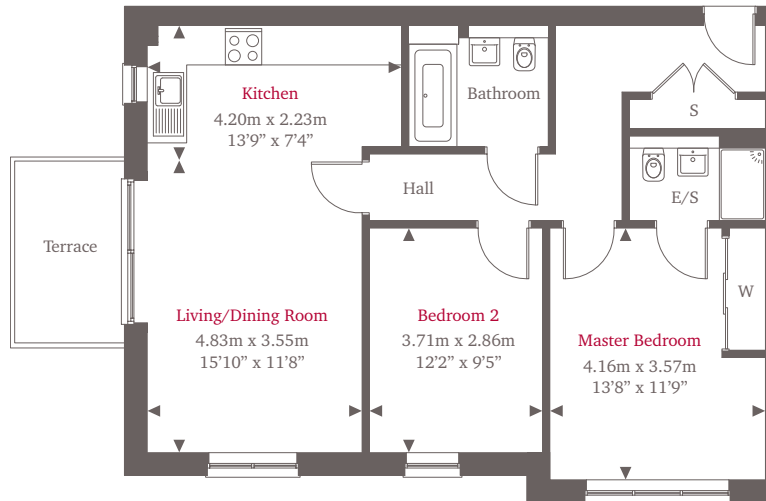


SITE PLAN

This site plan is a guide for illustrative purposes only. Landscaping shown is indicative only.

Plot 44

This stylish 793 square foot two-bedroom apartment is finished to the highest standard. Built with an incredible attention to detail, this modern apartment includes a spacious open-plan living/dining room leading out onto the terrace. Fitted with a contemporary kitchen, this apartment is perfect to entertain guests and family. The apartment is complete with a master bedroom with an en-suite, a second bedroom and a luxurious bathroom.



Third Floor



Second Floor



First Floor



Ground Floor

For more information please call **01372 225007**

shanlyhomes.com

◀ Point from which maximum dimensions are measured. Dimensions are intended for guidance only and may vary by plus or minus 7.6cm/3". The plots indicate general layout only which may vary from other plots. W denotes wardrobe. S denotes storage. Please contact sales consultant for more information.

SHANLY
HOMES