

Banks Place

London Road, Isleworth, London, TW7 4EJ

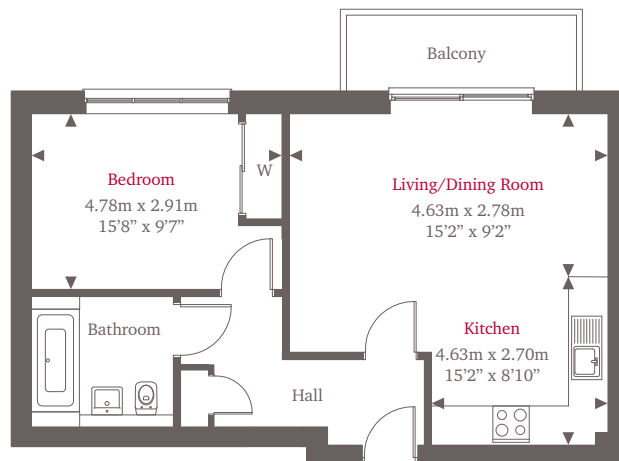


SITE PLAN

This site plan is a guide for illustrative purposes only. Landscaping shown is indicative only.

Plot 55

This stylish 546 square foot one-bedroom apartment, is finished to the highest detail. It includes a spacious living/dining room that follows onto the balcony. The kitchen is fitted with fully integrated A-rated appliances. A luxurious bathroom, spacious bedroom with fitted wardrobes and generous storage space complete this apartment.



Third Floor



Second Floor



First Floor



Ground Floor

For more information please call **01372 225007**

shanlyhomes.com

◀ Point from which maximum dimensions are measured. Dimensions are intended for guidance only and may vary by plus or minus 7.6cm/3". The plots indicate general layout only which may vary from other plots. W denotes wardrobe. S denotes storage. Please contact sales consultant for more information.

SHANLY
HOMES